



The BACW's Bidding Commission hereby presents questions made by companies with their respective answers.

REMARK: The questions presented in this "Questions and Answers" are numbered as they are answered by the Bidding Commission and may not match the numbering provided by the companies.

1. **Question** – *During site survey, we learned that the Remote Tower Center will be hosted in an annex building yet to be construed. In order to help us efficiently quote installation services, we kindly ask you to supply an **electric diagram of the premises to be built for hosting the Remote Tower Center.** Would there be any Electrical diagrams of the Remote TWR Center to be built (**TWR Cabin, Technical Center, Electrical Center**) ?"*

ANSWER: Please find attached the requested diagrams.

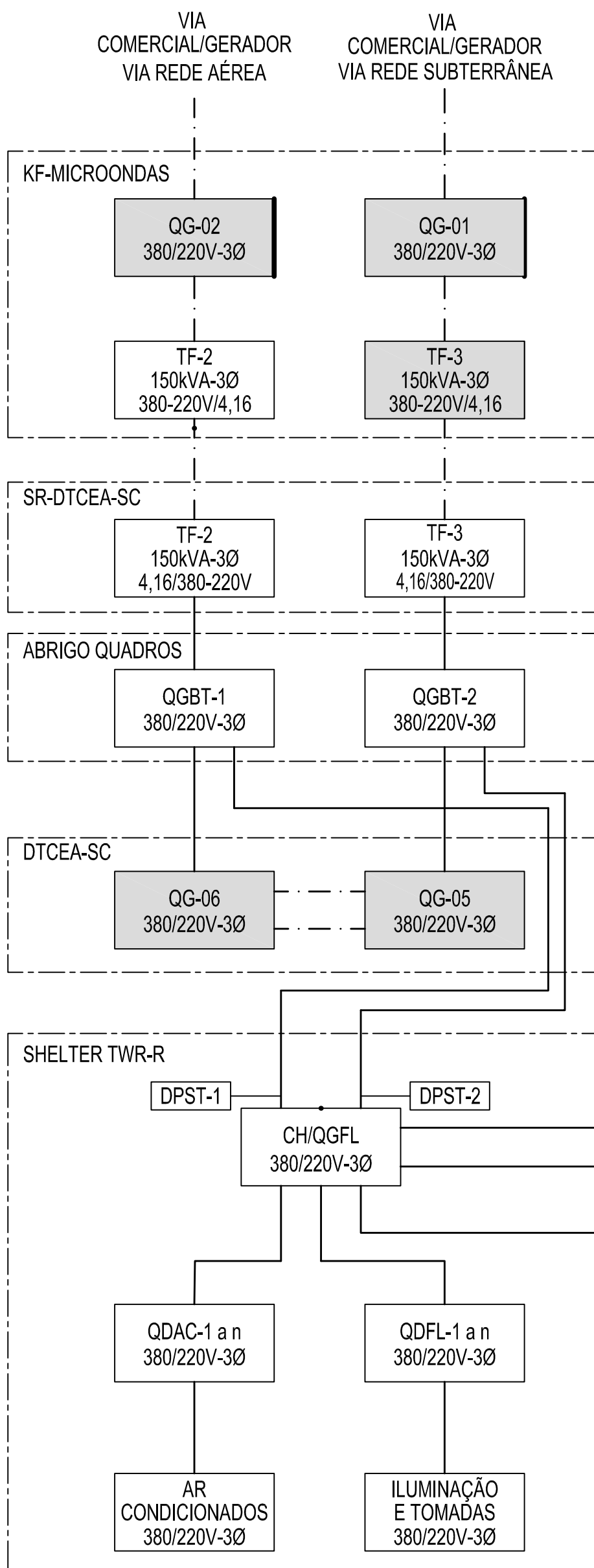
Notwithstanding, In accordance with the Invitation For Bid 180393/CABW/2018 item 28.1, *Any doubts arising from the provisions of this INVITATION FOR BID may be subject to consultation, in writing, to the **Bidding Committee** in charge of this bidding process, up to 48 (forty-eight) hours prior to the delivery of the proposals.*

Based on that, the BACW's Bidding Committee reinforces that questions shall be submitted to con@cabw.org and no agents outside BACW should be copied in the e-mail. Thus, only answers published in BACW's website are considered official and part of the solicitation file.

Furthermore, the Brazilian Aeronautical Commission appreciates the question, and stands available to clarify and explain any doubts or concerns in order to increase the BIDDING quality. Any questions or concerns must be submitted to con@cabw.org

Note: This information has been made available at BACW website in the publishing for the related Bidding Process.
<http://www.cabwnews.com/index.php/solicitations.html>

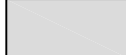

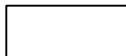
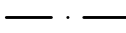

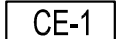
ANEXO A: DIAGRAMA DE BLOCOS SIMPLIFICADO



LEGENDAS:

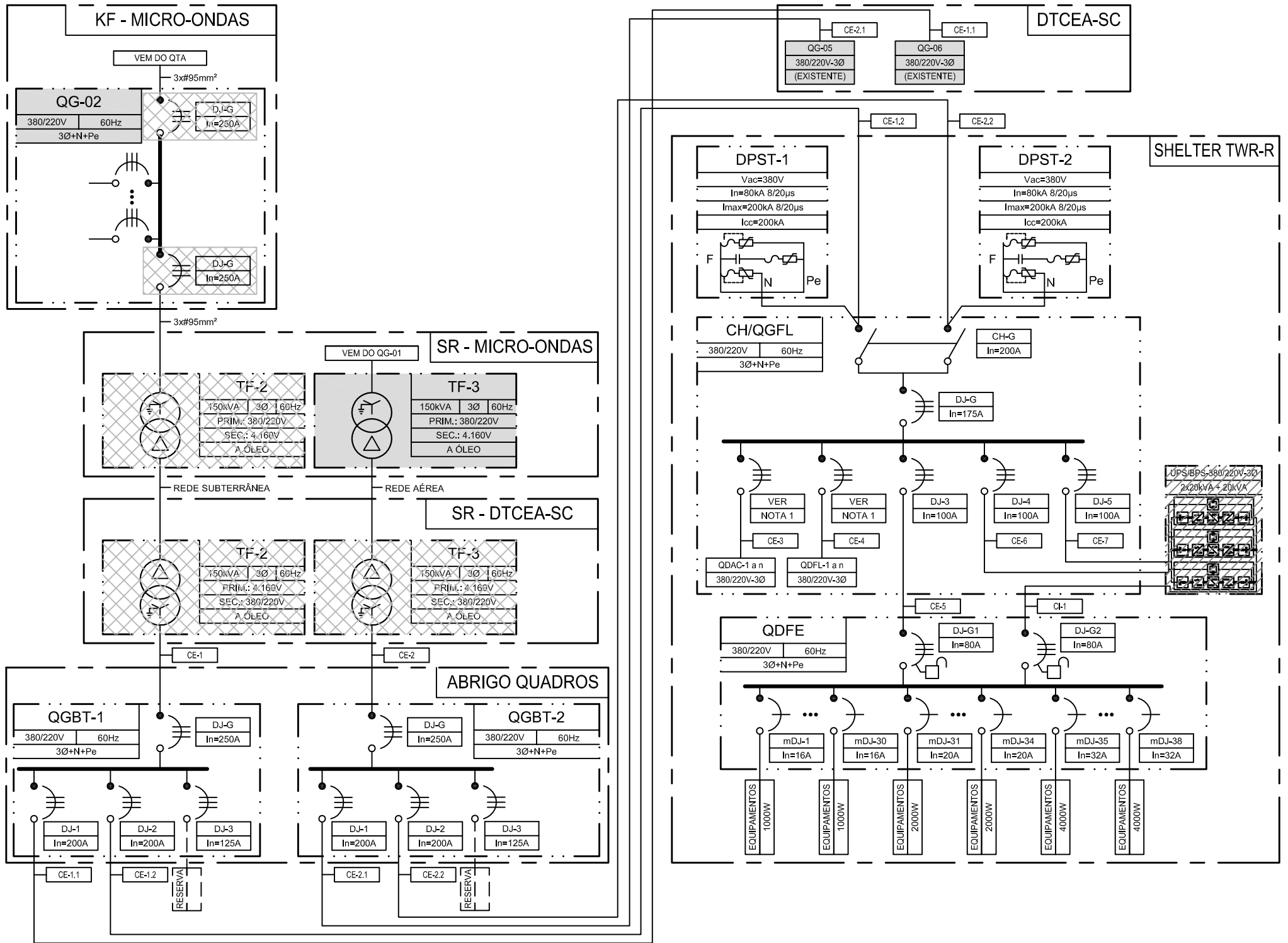
- AC - CIRCUITO DE DISTRIBUIÇÃO DE AR CONDICIONADO
- BPS - BANCO DE BATERIAS DA UPS
- CE/CI - CIRCUITOS DE FORÇA DE EMERGÊNCIA / ININTERRUPTO
- CFE - CIRCUITO DE FORÇA DE EQUIPAMENTO
- CH - CHAVE SECCIONADORA DE DUAS POSIÇÕES
- DPST - DISPOSITIVO DE PROTEÇÃO CONTRA SURTOS E TRANSIENTES
- KF - CASA DE FORÇA
- QDAC - QUADRO DE DISTRIBUIÇÃO DE AR CONDICIONADOS
- QDFE - QUADRO DE DISTRIBUIÇÃO DE FORÇA PARA EQUIPAMENTOS
- QDFL - QUADRO DE DISTRIBUIÇÃO DE FORÇA E LUZ
- QG - QUADRO DE DISTRIBUIÇÃO GERAL
- QGBT - QUADRO GERAL DE BAIXA TENSÃO
- QGFE - QUADRO GERAL DE FORÇA DE EQUIPAMENTOS
- QGFL - QUADRO GERAL DE FORÇA E LUZ
- QPST - QUADRO DE PROTEÇÃO CONTRA SURTOS E TRANSIENTES
- SR - SUBESTAÇÃO REMOTA
- TF - TRANSFORMADOR DE FORÇA
- UPS- SISTEMA ININTERRUPTO DE ENERGIA

SIMBOLOGIAS:

-  - EQUIPAMENTO EXISTENTE
-  - EQUIPAMENTO A SER FORNECIDO PELA CISCEA
-  - A SUBSTITUIR / A INSTALAR
-  - CONDUTORES DE ENERGIA E DE ATERRAMENTO EXISTENTE
-  - CONDUTORES DE ENERGIA E DE ATERRAMENTO A INSTALAR
-  - IDENTIFICAÇÃO DOS CIRCUITOS

OBS.: O LOCAL IDENTIFICADO COMO ABRIGO DOS QUADROS DEVERÁ SER CONSTRUÍDO

ANEXO B: DIAGRAMA UNIFILAR SIMPLIFICADO



LISTA DE CABOS

CÓDIGO DO CIRCUITO	ORIGEM	DESTINO	SEÇÃO (mm ²)	SISTEMA	NÚMERO DE CABOS	DISTÂNCIA (m)	DISTÂNCIA TOTAL (m)	ISOLAÇÃO / COBERTURA	TENSÃO DE ISOLAMENTO	CLASSE DE ENCORD.
CIRCUITOS CE E CFE										
CE-1	TF-2 (SR-DTCEA-SC)	QGBT-1 (ABRIGO QUADROS)	2x95	3F+N	8	30	240	HEPR / HTP	0,6/1kV	5
CE-2	TF-3 (SR-DTCEA-SC)	QGBT-2 (ABRIGO QUADROS)	2x95	3F+N	8	30	240	HEPR / HTP	0,6/1kV	5
CE-1.1	QGBT-1 (ABRIGO QUADROS)	QG-06 (DTCEA-SC)	2x95	3F+N+Pe	10	50	500	HEPR / HTP	0,6/1kV	5
CE-1.2	QGBT-1 (ABRIGO QUADROS)	CH/QGFL (TWR-R)	2x70	3F+N+Pe	10	40	400	HEPR / HTP	0,6/1kV	5
CE-2.1	QGBT-2 (ABRIGO QUADROS)	DQG-05 (DTCEA-SC)	2x95	3F+N+Pe	10	50	500	HEPR / HTP	0,6/1kV	5
CE-2.2	QGBT-2 (ABRIGO QUADROS)	CH/QGFL (TWR-R)	2x70	3F+N+Pe	10	40	400	HEPR / HTP	0,6/1kV	5
CE-3 (VER NOTA 1)	QGFL (SHELTER TWR-R)	QDAC-1 (SHELTER TWR-R)	-	-	-	-	-	-	-	-
CE-4 (VER NOTA 1)	QGFL (SHELTER TWR-R)	QDFL-1 (SHELTER TWR-R)	-	-	-	-	-	-	-	-
CE-5 (VER NOTA 1)	QGFL (SHELTER TWR-R)	QDFE (SHELTER TWR-R)	-	-	-	-	-	-	-	-
CE-6 (VER NOTA 1)	QGFL (SHELTER TWR-R)	UPS/BPS (SHELTER TWR-R)	-	-	-	-	-	-	-	-
CE-7 (VER NOTA 1)	QGFL (SHELTER TWR-R)	UPS/BPS (SHELTER TWR-R)	-	-	-	-	-	-	-	-
CI-1 (VER NOTA 1)	UPS/BPS (SHELTER TWR-R)	QDFE (SHELTER TWR-R)	-	-	-	-	-	-	-	-

NOTA:

1 - A SER DEFINIDO PELO FORNECEDOR DO SHELTER.

SIMBOLOGIAS:

- EQUIPAMENTO A SER SUBSTITUÍDO
- EQUIPAMENTO EXISTENTE
- EQUIPAMENTO A SER FORNECIDO PELA CISCEA
- EQUIPAMENTO A SER FORNECIDO PELA CONTRATADA
- IDENTIFICAÇÃO DOS CIRCUITOS

NOTA 1 - A SER DEFINIDO PELO FABRICANTE DO CONTAINER METÁLICO